

Prescription Drug Monitoring Program Surveillance

Opioid Prescription Pattern Pre-and Post-Implementation of AB474

2017-2018



*Office of Analytics
Department of Health and Human Services*

Steve Sisolak
*Governor
State of Nevada*

Richard Whitley, MS
*Director
Department of Health and Human Services*

Department of Health and Human Services
Office of Analytics

Prescription Database Monitoring Program

Data Source: Department of Health and Human Services, Prescription Drug Monitoring Program System.

Data Provided by: Office of Analytics.

Opioid analgesic controlled substance prescriptions dispensed including schedule II, III, and IV prescription opioids dispensed to patients, as entered into the state prescription drug monitoring program (PDMP) system.

Data are total number of prescriptions filled to Nevada residents, this does not capture whether the medications were taken as prescribed or taken by the prescribed patient. A person can be included for more than one prescription and therefore the not mutually exclusive.

Opioids used to treat opioid addiction, moderate acute pain and moderate chronic pain are excluded from this report. These prescriptions include variations of the drugs listed below:

<i>Naloxone</i>	<i>52544</i>
<i>Buprenorphine/ Naloxone</i>	<i>00054, 00093, 00228, 00406, 42291, 50268, 50383, 53217, 54569, 55700, 60429, 65162</i>
<i>Probuphine</i>	<i>58284</i>
<i>Suboxone/Zubsolv</i>	<i>00490, 12496, 16590, 23490, 35356, 43063, 49999, 52959, 54123, 54569</i>
<i>Sublocade</i>	<i>49000</i>
<i>Methadone</i>	<i>00054, 54868, 55887, 57866, 66336, 68115</i>
<i>Buprenorphine</i>	<i>00054, 00093, 00228, 00378, 35356, 42858, 43063, 50383, 53217, 54569, 55700, 62756, 68258, 68308, 68308</i>

Please use caution when interpreting rates corresponding to small counts.

Impact Analysis: Opioid Prescription Patterns Pre and Post Implementation of AB 474

Excluding Opioid Addiction Treatment Drugs

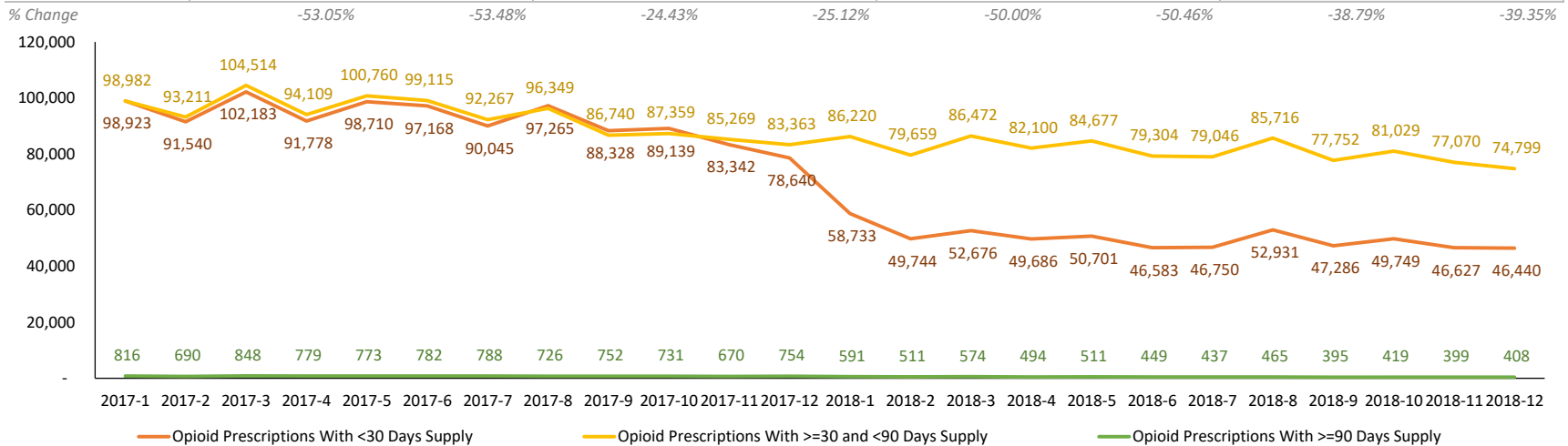
Prescription Drug Monitoring Program Data, 2017 - 2018

Summary Highlights:

- From January of 2017 to December of 2018, there was a 39% decrease in the rate of opioid prescriptions per 100 Nevada residents.
 - Opioid prescriptions with less than a 30 days supply decreased by 53%.
 - Opioid prescriptions with greater than or equal to a 30 days supply and less than a 90 days supply decreased by 24%.
 - Opioid prescriptions with greater than or equal to a 90 days supply decreased by 50%.
- All Nevada counties observed a decrease in both the number of and rate of opioid prescriptions by month, with the decrease in rates ranging from 21% (Lincoln) to 58% (Esmeralda).
- The number of unique patients receiving less than 50 MMEs per month decreased 32% from January of 2017 to December of 2018.
- The number of unique patients receiving 50 MMEs to 90 MMEs per month decreased approximately 51% from January of 2017 to December of 2018.
- The number of unique patients receiving greater than 90 MMEs per month decreased 46% from January of 2017 to December of 2018.
- Diagnosis information is available for 2018 only:
 - Diseases of the Nervous System, Pain (ICD-10-CM code G89) was the second most common diagnosis code on prescriptions with less than a 30 days supply, the fourth most common diagnosis code on prescriptions with a 30-89 days supply and the third most common diagnosis code on prescriptions with a 90 day or greater days supply. Medicated Assisted Treatment drugs (MAT) were excluded from this analysis, therefore Opioid Related Disorders (F11) did not appear as a top diagnosis.
 - Dorsalgia (back pain) was the most common diagnosis among all opioid prescriptions, regardless of the days supply on the prescription.
- The number of individuals who were co-prescribed Opioid and Benzodiazepines during the same month also decreased significantly, by 57% in Nevada overall.

Opioid Prescription Counts and Rates per 100 Population For Less Than and Greater Than 30 Days and 90 Days by Month, 2017 - 2018

	Opioid Prescriptions With <30 Days Supply		Opioid Prescriptions With >=30 and <90 Days Supply		Opioid Prescriptions With >=90 Days Supply		Total Opioid Prescriptions by Month	
	N	Rate per 100 Population	N	Rate per 100 Population	N	Rate per 100 Population	N	Rate per 100 Population
2017-1	98,923	3.31	98,982	3.32	816	0.03	198,721	6.66
2017-2	91,540	3.07	93,211	3.12	690	0.02	185,441	6.21
2017-3	102,183	3.42	104,514	3.50	848	0.03	207,545	6.95
2017-4	91,778	3.07	94,109	3.15	779	0.03	186,666	6.25
2017-5	98,710	3.31	100,760	3.38	773	0.03	200,243	6.71
2017-6	97,168	3.26	99,115	3.32	782	0.03	197,065	6.60
2017-7	90,045	3.02	92,267	3.09	788	0.03	183,100	6.13
2017-8	97,265	3.26	96,349	3.23	726	0.02	194,340	6.51
2017-9	88,328	2.96	86,740	2.91	752	0.03	175,820	5.89
2017-10	89,139	2.99	87,359	2.93	731	0.02	177,229	5.94
2017-11	83,342	2.79	85,269	2.86	670	0.02	169,281	5.67
2017-12	78,640	2.63	83,363	2.79	754	0.03	162,757	5.45
2018-1	58,733	1.95	86,220	2.86	591	0.02	145,544	4.83
2018-2	49,744	1.65	79,659	2.64	511	0.02	129,914	4.31
2018-3	52,676	1.75	86,472	2.87	574	0.02	139,722	4.64
2018-4	49,686	1.65	82,100	2.73	494	0.02	132,280	4.39
2018-5	50,701	1.68	84,677	2.81	511	0.02	135,889	4.51
2018-6	46,583	1.55	79,304	2.63	449	0.01	126,336	4.19
2018-7	46,750	1.55	79,046	2.62	437	0.01	126,233	4.19
2018-8	52,931	1.76	85,716	2.85	465	0.02	139,112	4.62
2018-9	47,286	1.57	77,752	2.58	395	0.01	125,433	4.16
2018-10	49,749	1.65	81,029	2.69	419	0.01	131,197	4.35
2018-11	46,627	1.55	77,070	2.56	399	0.01	124,096	4.12
2018-12	46,440	1.54	74,799	2.48	408	0.01	121,647	4.04



Note: Annual population estimates were used for the denominator each month because monthly populations are not available. Therefore this representation is not comparable to annual prescription rates per 100 population.

Department of Health and Human Services
Office of Analytics

Opioid Prescription Counts by Month and Resident County, 2017 - 2018

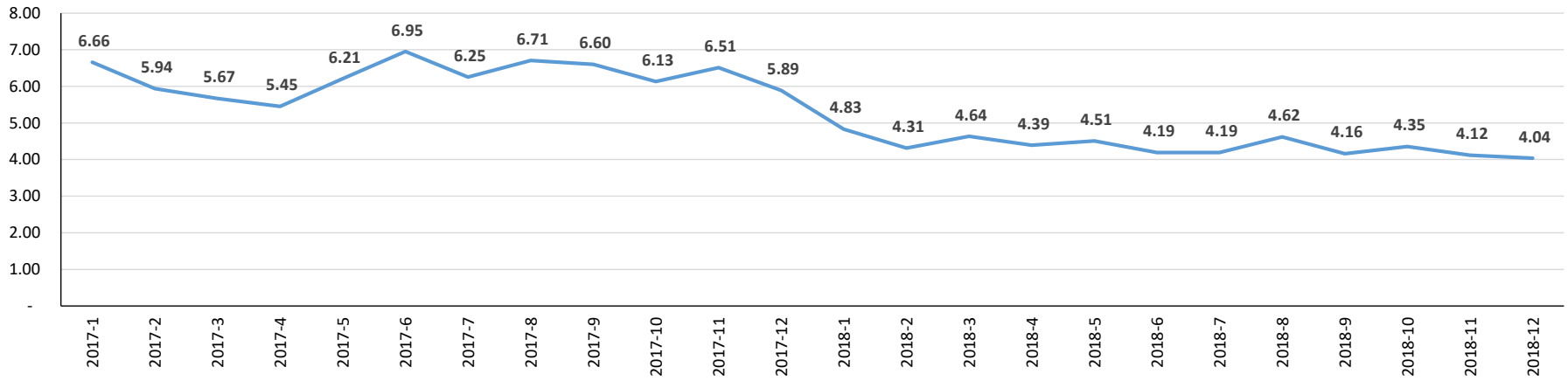
	Carson City	Churchill	Clark	Douglas	Elko	Esmeralda	Eureka	Humboldt	Lander	Lincoln	Lyon	Mineral	Nye	Pershing	Storey	Washoe	White Pine	Total
2017-1	4,525	2,181	140,961	3,910	2,977	52	160	1,035	408	372	5,300	482	5,369	377	442	29,422	748	198,721
2017-2	4,097	1,981	132,143	3,525	2,683	44	142	967	383	320	4,981	418	4,962	359	435	27,282	719	177,229
2017-3	4,540	2,285	147,720	4,074	3,093	58	142	1,047	469	312	5,665	481	5,546	384	469	30,486	774	169,281
2017-4	4,142	1,995	132,645	3,638	2,710	45	142	955	408	341	5,067	489	5,070	328	411	27,513	767	162,757
2017-5	4,508	2,229	142,216	3,823	3,007	49	145	920	400	448	5,301	451	5,334	397	465	29,720	830	185,441
2017-6	4,256	2,145	140,399	3,809	2,813	52	158	960	419	411	5,126	538	5,249	374	442	29,137	777	207,545
2017-7	4,029	2,068	130,586	3,451	2,864	56	132	900	418	356	4,959	451	4,861	296	392	26,515	766	186,666
2017-8	4,499	2,241	137,920	3,869	2,911	48	139	964	400	368	5,246	519	5,109	358	434	28,534	781	200,243
2017-9	4,112	2,060	123,970	3,568	2,761	47	137	892	377	373	4,921	488	4,722	298	415	25,962	717	197,065
2017-10	4,110	2,027	124,398	3,594	2,787	36	127	917	373	374	4,919	463	4,865	311	398	26,787	743	183,100
2017-11	3,888	1,811	117,835	3,335	2,749	35	123	910	384	363	4,720	375	4,553	313	408	26,769	710	194,340
2017-12	3,773	1,845	113,370	3,383	2,351	31	106	853	318	335	4,580	386	4,324	293	403	25,744	662	175,820
2018-1	3,442	1,612	101,530	3,176	1,875	31	95	677	295	356	4,119	402	4,104	261	337	22,609	623	145,544
2018-2	3,018	1,433	90,955	2,801	1,710	35	84	650	258	302	3,619	344	3,793	234	283	19,974	421	129,914
2018-3	3,244	1,549	97,653	3,021	1,827	33	97	670	265	324	3,942	383	4,054	265	337	21,490	568	139,722
2018-4	3,054	1,405	92,749	2,777	1,830	32	91	615	253	316	3,772	312	3,890	248	299	20,063	574	132,280
2018-5	3,101	1,517	95,477	2,969	1,904	30	95	675	282	316	3,907	331	4,032	257	343	20,079	574	135,889
2018-6	2,944	1,383	88,935	2,840	1,744	33	93	632	254	317	3,648	330	3,718	245	314	18,326	580	126,336
2018-7	2,983	1,375	88,762	2,844	1,776	33	86	565	287	334	3,669	311	3,722	227	328	18,400	531	126,233
2018-8	3,256	1,544	99,055	2,993	1,865	32	91	582	256	324	3,894	330	4,019	252	342	19,728	549	139,112
2018-9	2,879	1,322	89,613	2,755	1,647	26	76	457	225	275	3,495	275	3,624	207	310	17,753	494	125,433
2018-10	3,010	1,489	92,952	2,946	1,769	23	93	531	228	312	3,720	294	3,924	279	294	18,773	560	131,197
2018-11	2,863	1,394	87,683	2,743	1,718	28	63	496	218	280	3,566	314	3,693	273	264	17,987	513	124,096
2018-12	2,844	1,326	85,618	2,733	1,722	22	69	499	215	297	3,490	318	3,658	243	262	17,798	533	121,647
% Change	-37.15%	-39.20%	-39.26%	-30.10%	-42.16%	-57.69%	-56.88%	-51.79%	-47.30%	-20.16%	-34.15%	-34.02%	-31.87%	-35.54%	-40.72%	-39.51%	-28.74%	-38.79%

Department of Health and Human Services
Office of Analytics

Opioid Prescription Rates per 100 Population by Month and Resident County, 2017 - 2018

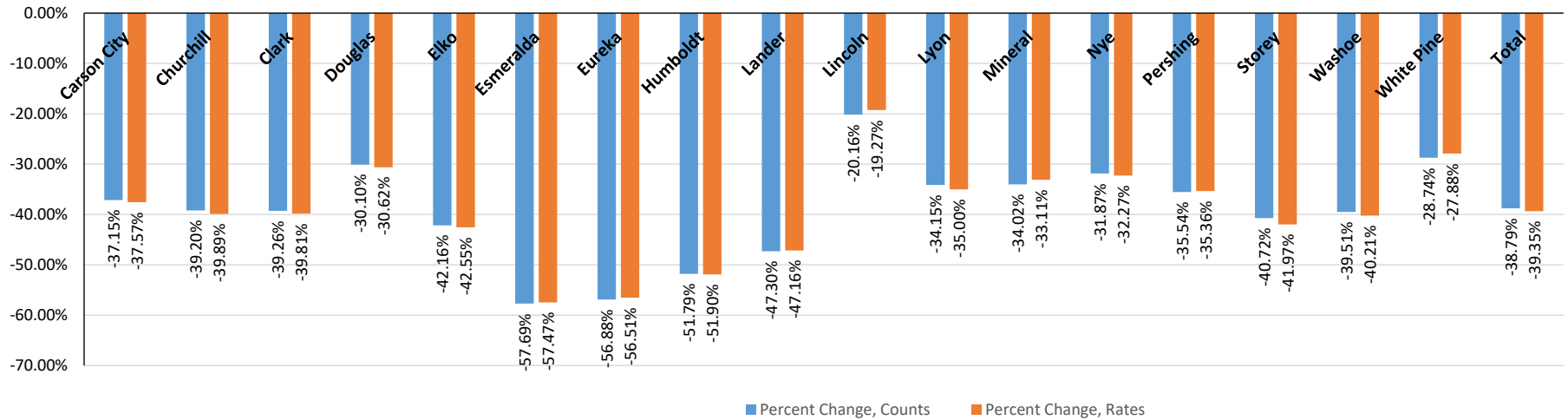
	Carson City	Churchill	Clark	Douglas	Elko	Esmeralda	Eureka	Humboldt	Lander	Lincoln	Lyon	Mineral	Nye	Pershing	Storey	Washoe	White Pine	Total
2017-1	8.15	8.54	6.43	8.05	5.46	5.42	8.46	6.13	6.57	7.47	9.74	10.68	11.66	5.68	10.53	6.49	7.26	6.66
2017-2	7.38	7.76	6.03	7.25	4.92	4.58	7.51	5.73	6.17	6.42	9.15	9.26	10.77	5.41	10.36	6.02	6.98	5.94
2017-3	8.18	8.95	6.74	8.38	5.68	6.04	7.51	6.20	7.55	6.26	10.41	10.66	12.04	5.79	11.17	6.72	7.51	5.67
2017-4	7.46	7.81	6.06	7.49	4.97	4.69	7.51	5.66	6.57	6.84	9.31	10.84	11.01	4.94	9.79	6.07	7.44	5.45
2017-5	8.12	8.73	6.49	7.87	5.52	5.10	7.66	5.45	6.44	8.99	9.74	10.00	11.58	5.98	11.07	6.56	8.06	6.21
2017-6	7.67	8.40	6.41	7.84	5.16	5.42	8.35	5.69	6.75	8.25	9.42	11.92	11.40	5.64	10.53	6.43	7.54	6.95
2017-7	7.26	8.10	5.96	7.10	5.25	5.83	6.98	5.33	6.73	7.15	9.11	10.00	10.56	4.46	9.34	5.85	7.43	6.25
2017-8	8.10	8.77	6.30	7.96	5.34	5.00	7.35	5.71	6.44	7.39	9.64	11.50	11.09	5.40	10.34	6.29	7.58	6.71
2017-9	7.41	8.07	5.66	7.34	5.07	4.90	7.24	5.29	6.07	7.49	9.04	10.82	10.25	4.49	9.88	5.73	6.96	6.60
2017-10	7.40	7.94	5.68	7.40	5.11	3.75	6.71	5.43	6.01	7.51	9.04	10.26	10.56	4.69	9.48	5.91	7.21	6.13
2017-11	7.00	7.09	5.38	6.86	5.04	3.65	6.50	5.39	6.18	7.29	8.67	8.31	9.89	4.72	9.72	5.90	6.89	6.51
2017-12	6.80	7.22	5.18	6.96	4.31	3.23	5.60	5.05	5.12	6.72	8.42	8.55	9.39	4.42	9.60	5.68	6.42	5.89
2018-1	6.16	6.24	4.59	6.49	3.42	3.25	5.06	4.00	4.76	7.23	7.47	9.03	8.86	3.94	7.86	4.93	6.12	4.83
2018-2	5.40	5.55	4.11	5.72	3.12	3.66	4.48	3.84	4.17	6.13	6.56	7.73	8.19	3.54	6.60	4.35	4.14	4.31
2018-3	5.80	6.00	4.42	6.17	3.33	3.46	5.17	3.96	4.28	6.58	7.15	8.61	8.75	4.01	7.86	4.69	5.58	4.64
2018-4	5.46	5.44	4.20	5.67	3.33	3.35	4.85	3.64	4.09	6.41	6.84	7.01	8.40	3.75	6.97	4.37	5.64	4.39
2018-5	5.55	5.87	4.32	6.06	3.47	3.14	5.06	3.99	4.55	6.41	7.09	7.44	8.70	3.88	8.00	4.38	5.64	4.51
2018-6	5.27	5.35	4.02	5.80	3.18	3.46	4.96	3.74	4.10	6.43	6.62	7.42	8.03	3.70	7.32	4.00	5.70	4.19
2018-7	5.34	5.32	4.02	5.81	3.24	3.46	4.58	3.34	4.64	6.78	6.66	6.99	8.03	3.43	7.65	4.01	5.22	4.19
2018-8	5.83	5.98	4.48	6.11	3.40	3.35	4.85	3.44	4.13	6.58	7.06	7.42	8.68	3.81	7.97	4.30	5.39	4.62
2018-9	5.15	5.12	4.05	5.63	3.00	2.72	4.05	2.70	3.63	5.58	6.34	6.18	7.82	3.13	7.23	3.87	4.85	4.16
2018-10	5.39	5.76	4.20	6.02	3.22	2.41	4.96	3.14	3.68	6.33	6.75	6.61	8.47	4.22	6.85	4.09	5.50	4.35
2018-11	5.12	5.40	3.97	5.60	3.13	2.93	3.36	2.93	3.52	5.68	6.47	7.06	7.97	4.13	6.16	3.92	5.04	4.12
2018-12	5.09	5.13	3.87	5.58	3.14	2.30	3.68	2.95	3.47	6.03	6.33	7.15	7.90	3.67	6.11	3.88	5.24	4.04
% Change	-37.57%	-39.89%	-39.81%	-30.62%	-42.55%	-57.47%	-56.51%	-51.90%	-47.16%	-19.27%	-35.00%	-33.11%	-32.27%	-35.36%	-41.97%	-40.21%	-27.88%	-39.35%

Nevada Opioid Prescription Rate per 100 Population, by Month, 2017 - 2018



Note: Annual population estimates were used for the denominator each month because monthly populations are not available. Therefore this representation is not comparable to **annual** prescription rates per 100 population.

Overall Percent Change (from January of 2017 to December of 2018) in Opioid Prescription Rates per 100 Population and Resident County



Number of Opioid Prescriptions and Patients with Less Than 50 MMEs per Month, by Month and Resident County, 2017 - 2018

Carson City - Lander Counties

	Carson City		Churchill		Clark		Douglas		Elko		Esmeralda		Eureka		Humboldt		Lander	
	Prescriptions	Patients	Prescriptions	Patients	Prescriptions	Patients	Prescriptions	Patients	Prescriptions	Patients	Prescriptions	Patients	Prescriptions	Patients	Prescriptions	Patients	Prescriptions	Patients
2017-1	3,117	2,640	1,534	1,239	95,390	83,116	2,596	2,221	2,207	1,861	36	32	89	71	748	614	328	259
2017-2	2,777	2,443	1,372	1,146	89,661	79,310	2,378	2,049	1,951	1,695	31	28	75	63	677	588	306	251
2017-3	3,118	2,660	1,586	1,266	100,092	85,870	2,719	2,295	2,283	1,909	42	37	81	64	758	603	368	293
2017-4	2,830	2,463	1,392	1,175	90,165	79,746	2,401	2,065	2,005	1,742	31	28	72	66	694	598	334	267
2017-5	3,132	2,640	1,529	1,252	96,879	83,450	2,562	2,188	2,228	1,880	37	35	77	63	642	553	320	246
2017-6	2,948	2,510	1,457	1,176	95,536	82,424	2,553	2,184	2,110	1,825	36	32	88	78	683	586	324	251
2017-7	2,856	2,439	1,402	1,153	89,030	77,809	2,343	2,022	2,148	1,802	40	38	79	67	640	545	332	278
2017-8	3,130	2,560	1,514	1,171	94,407	81,246	2,627	2,203	2,162	1,799	35	28	83	73	689	582	308	235
2017-9	2,868	2,411	1,416	1,161	85,936	75,645	2,416	2,071	2,049	1,737	29	28	86	69	655	552	298	246
2017-10	2,854	2,424	1,368	1,161	85,645	75,094	2,457	2,096	2,064	1,707	26	24	81	71	668	554	295	226
2017-11	2,711	2,341	1,234	1,004	80,049	70,136	2,223	1,927	2,092	1,748	26	25	75	62	676	560	303	248
2017-12	2,645	2,255	1,250	1,027	77,770	67,898	2,337	2,011	1,751	1,491	22	21	64	56	599	508	249	200
2018-1	2,470	2,174	1,198	1,000	72,127	63,608	2,309	1,982	1,465	1,235	25	23	64	56	517	454	236	183
2018-2	2,184	1,944	1,071	911	65,000	58,660	2,079	1,809	1,312	1,144	29	25	56	47	507	458	212	174
2018-3	2,324	2,008	1,188	983	69,947	61,310	2,232	1,932	1,417	1,238	24	21	73	63	528	451	207	172
2018-4	2,235	1,963	1,066	917	66,906	59,896	2,059	1,830	1,432	1,226	23	20	61	51	480	434	195	166
2018-5	2,241	1,958	1,164	973	68,489	60,023	2,217	1,929	1,522	1,292	24	19	66	54	514	456	218	178
2018-6	2,190	1,946	1,063	917	64,236	57,285	2,152	1,908	1,376	1,177	28	26	67	57	486	441	202	168
2018-7	2,219	1,918	1,058	910	64,051	57,044	2,157	1,855	1,411	1,211	24	22	62	52	451	407	236	185
2018-8	2,475	2,134	1,222	1,018	70,929	61,830	2,281	1,951	1,503	1,276	28	26	65	56	445	378	222	178
2018-9	2,126	1,893	1,054	900	64,416	57,350	2,088	1,821	1,289	1,130	21	19	54	49	366	319	179	148
2018-10	2,251	1,972	1,190	980	67,774	59,280	2,272	1,949	1,405	1,213	18	16	77	69	417	363	183	148
2018-11	2,125	1,864	1,093	930	63,863	56,181	2,105	1,845	1,371	1,186	24	21	48	43	383	331	185	160
2018-12	2,108	1,857	1,028	890	62,178	55,151	2,084	1,829	1,381	1,205	17	17	53	49	375	345	176	156
% Change	-32.4%	-29.7%	-33.0%	-28.2%	-34.8%	-33.6%	-19.7%	-17.6%	-37.4%	-35.2%	-52.8%	-46.9%	-40.4%	-31.0%	-49.9%	-43.8%	-46.3%	-39.8%

Number of Opioid Prescriptions and Patients with more than 50 and Less Than 90 MMEs per Month, by Month and Resident County, 2017 - 2018

Carson City - Lander Counties

	Carson City		Churchill		Clark		Douglas		Elko		Esmeralda		Eureka		Humboldt		Lander	
	Prescriptions	Patients	Prescriptions	Patients	Prescriptions	Patients	Prescriptions	Patients	Prescriptions	Patients	Prescriptions	Patients	Prescriptions	Patients	Prescriptions	Patients	Prescriptions	Patients
2017-1	791	689	445	388	25,561	22,733	761	681	523	467	9	8	42	37	172	144	63	58
2017-2	753	689	411	375	23,840	21,585	662	613	495	456	7	7	42	35	169	145	55	51
2017-3	810	705	496	420	26,861	23,252	785	692	549	478	9	8	40	37	166	145	76	63
2017-4	735	656	425	375	24,164	21,725	734	675	490	447	7	6	44	40	140	123	48	44
2017-5	750	654	486	412	25,763	22,480	724	653	536	472	4	4	44	40	165	146	49	43
2017-6	709	631	497	422	25,584	22,221	746	661	473	423	9	9	48	47	175	146	64	54
2017-7	656	598	473	402	23,654	20,874	645	584	479	422	9	9	34	33	160	144	61	54
2017-8	792	649	511	420	24,973	21,737	746	640	497	436	7	5	43	39	164	143	61	51
2017-9	714	616	474	406	22,133	19,922	696	622	473	423	14	11	36	35	141	120	60	53
2017-10	709	613	493	416	22,609	20,210	693	601	485	435	7	6	29	26	149	126	60	50
2017-11	667	592	419	350	21,673	19,244	643	578	437	396	7	7	35	31	141	118	57	49
2017-12	622	553	431	376	19,989	17,659	613	554	394	350	6	6	31	27	156	138	44	40
2018-1	520	450	287	257	15,518	13,780	510	460	263	223	4	4	23	20	98	92	36	31
2018-2	469	435	268	242	13,716	12,443	432	398	269	236	4	4	24	24	91	82	31	30
2018-3	524	453	262	237	14,562	12,733	492	443	273	232	5	5	19	17	84	77	41	35
2018-4	453	417	266	239	13,433	12,127	439	406	276	236	5	5	23	21	83	75	42	34
2018-5	493	420	262	234	14,034	12,249	459	419	256	215	3	3	25	23	101	95	41	34
2018-6	414	384	233	216	12,937	11,615	411	385	258	221	3	3	24	22	92	79	33	31
2018-7	435	396	225	200	12,777	11,407	411	370	250	205	7	5	21	21	64	61	34	31
2018-8	444	398	218	194	15,514	13,548	452	401	235	206	2	2	22	19	82	66	22	21
2018-9	415	377	190	178	13,836	12,571	417	397	238	213	4	4	15	15	55	50	32	28
2018-10	429	392	227	203	13,345	11,622	411	380	247	212	5	5	14	13	58	52	24	22
2018-11	406	374	225	188	12,490	11,107	407	374	226	197	4	4	14	11	68	60	20	20
2018-12	408	364	231	205	12,507	11,145	413	382	214	187	5	5	15	15	80	69	25	21
% Change	-48.42%	-47.17%	-48.09%	-47.16%	-51.07%	-50.97%	-45.73%	-43.91%	-59.08%	-59.96%	-44.44%	-37.50%	-64.29%	-59.46%	-53.49%	-52.08%	-60.32%	-63.79%

Number of Opioid Prescriptions and Patients with more than 90 MMEs per Month, by Month and Resident County, 2017 - 2018

Carson City - Lander Counties

	Carson City		Churchill		Clark		Douglas		Elko		Esmeralda		Eureka		Humboldt		Lander	
	Prescriptions	Patients	Prescriptions	Patients	Prescriptions	Patients	Prescriptions	Patients	Prescriptions	Patients	Prescriptions	Patients	Prescriptions	Patients	Prescriptions	Patients	Prescriptions	Patients
2017-1	617	484	202	164	20,010	15,549	553	453	247	205	7	6	29	25	115	87	17	14
2017-2	567	454	198	168	18,642	14,955	485	403	237	191	6	5	25	22	121	98	22	18
2017-3	612	481	203	167	20,767	15,685	570	440	261	204	7	5	21	18	123	90	25	22
2017-4	577	459	178	148	18,316	14,649	503	419	215	179	7	7	26	21	121	99	26	24
2017-5	626	476	214	163	19,574	15,030	537	441	243	194	8	6	24	16	113	88	31	25
2017-6	599	477	191	147	19,279	14,835	510	412	230	186	7	5	22	14	102	81	31	22
2017-7	517	423	193	149	17,902	14,161	463	388	237	190	7	6	19	14	100	78	25	20
2017-8	577	436	216	157	18,540	14,358	496	383	252	192	6	5	13	10	111	79	31	25
2017-9	530	414	170	133	15,901	12,919	456	379	239	196	4	4	15	13	96	75	19	16
2017-10	547	440	166	128	16,144	12,974	444	365	238	196	3	3	17	13	100	78	18	15
2017-11	510	421	158	130	16,113	12,889	469	385	220	180	2	2	13	10	93	76	24	20
2017-12	506	411	164	134	15,611	12,459	433	357	206	175	3	2	11	10	98	73	25	23
2018-1	452	363	127	101	13,885	11,160	357	290	147	117	2	2	8	6	62	48	23	18
2018-2	365	322	94	77	12,239	10,257	290	257	129	110	2	2	4	3	52	40	15	12
2018-3	396	327	99	76	13,144	10,456	297	253	137	108	4	4	5	4	58	47	17	14
2018-4	366	312	73	61	12,410	10,151	279	239	122	97	4	4	7	4	52	42	16	13
2018-5	367	302	91	76	12,954	10,168	293	253	126	100	3	3	4	3	60	44	23	17
2018-6	340	290	87	65	11,762	9,575	277	240	110	93	2	2	2	2	54	43	19	13
2018-7	329	274	92	77	11,934	9,590	276	235	115	91	2	2	3	3	50	36	17	15
2018-8	337	278	104	77	12,612	9,853	260	226	127	102	2	2	4	3	55	45	12	10
2018-9	338	290	78	61	11,361	9,288	250	222	120	92	1	1	7	4	36	32	14	9
2018-10	330	272	72	55	11,833	9,346	263	221	117	91	-	-	2	2	56	39	21	12
2018-11	332	276	76	57	11,330	9,032	231	201	121	94	-	-	1	1	45	34	13	10
2018-12	328	271	67	57	10,933	8,981	236	201	127	97	-	-	1	1	44	33	14	11
% Change	-46.84%	-44.01%	-66.83%	-65.24%	-45.36%	-42.24%	-57.32%	-55.63%	-48.58%	-52.68%	-100.00%	-100.00%	-96.55%	-96.00%	-61.74%	-62.07%	-17.65%	-21.43%

Number of Opioid Prescriptions and Patients with Less Than 50 MMEs per Month, by Month and Resident County, 2017 - 2018

Lincoln - White Pine Counties

	Lincoln		Lyon		Mineral		Nye		Pershing		Storey		Washoe		White Pine	
	Prescriptions	Patients	Prescriptions	Patients	Prescriptions	Patients	Prescriptions	Patients	Prescriptions	Patients	Prescriptions	Patients	Prescriptions	Patients	Prescriptions	Patients
2017-1	255	222	3,576	3,042	320	269	3,592	3,151	275	224	293	247	20,031	16,943	514	413
2017-2	226	209	3,330	2,908	279	241	3,321	2,970	269	219	290	247	18,512	15,943	469	392
2017-3	233	189	3,830	3,175	319	265	3,745	3,230	288	231	309	265	20,713	17,169	503	397
2017-4	233	207	3,450	3,000	340	293	3,423	3,035	247	206	273	239	18,705	16,122	508	411
2017-5	317	236	3,621	3,078	319	271	3,626	3,155	309	253	313	264	20,239	16,824	562	442
2017-6	283	225	3,498	2,973	366	294	3,551	3,095	281	228	287	250	19,913	16,724	515	392
2017-7	235	208	3,395	2,910	309	265	3,317	2,919	221	184	263	222	18,166	15,523	535	416
2017-8	256	216	3,569	3,015	349	285	3,477	3,037	253	199	283	249	19,784	16,579	526	396
2017-9	256	227	3,372	2,925	328	275	3,275	2,888	226	182	289	253	18,064	15,526	474	378
2017-10	260	228	3,446	2,975	310	246	3,376	2,946	234	199	283	245	19,011	15,747	524	414
2017-11	256	218	3,239	2,801	240	206	3,143	2,739	228	194	287	248	19,050	15,089	476	374
2017-12	234	210	3,160	2,731	262	220	2,979	2,619	212	181	271	236	18,329	14,560	457	381
2018-1	258	210	2,974	2,584	300	260	2,905	2,563	203	166	246	216	17,011	13,516	455	368
2018-2	231	209	2,664	2,366	250	219	2,693	2,422	180	156	199	177	14,961	12,249	309	261
2018-3	239	211	2,884	2,514	283	238	2,890	2,504	208	178	228	201	16,187	12,917	421	343
2018-4	234	203	2,798	2,490	240	213	2,851	2,509	193	168	207	189	15,111	12,157	419	345
2018-5	234	200	2,895	2,480	248	207	2,960	2,564	198	162	235	205	15,003	12,440	412	345
2018-6	245	221	2,734	2,405	247	214	2,744	2,395	203	164	226	203	13,633	11,891	418	337
2018-7	255	215	2,783	2,418	237	213	2,728	2,405	185	159	224	193	13,807	12,035	383	316
2018-8	241	221	2,943	2,562	245	212	2,959	2,593	210	179	232	192	14,905	12,787	413	341
2018-9	206	188	2,608	2,314	203	186	2,658	2,404	174	152	218	197	13,360	11,740	359	306
2018-10	235	208	2,814	2,433	219	193	2,927	2,537	232	192	205	179	14,219	12,260	414	336
2018-11	211	191	2,691	2,355	233	202	2,721	2,396	222	181	187	166	13,698	11,850	378	310
2018-12	222	194	2,636	2,316	240	213	2,700	2,362	200	168	185	164	13,485	11,634	385	330
% Change	-12.9%	-12.6%	-26.3%	-23.9%	-25.0%	-20.8%	-24.8%	-25.0%	-27.3%	-25.0%	-36.9%	-33.6%	-32.7%	-31.3%	-25.1%	-20.1%

Number of Opioid Prescriptions and Patients with more than 50 and Less Than 90 MMEs per Month, by Month and Resident County, 2017 - 2018

Lincoln - White Pine Counties

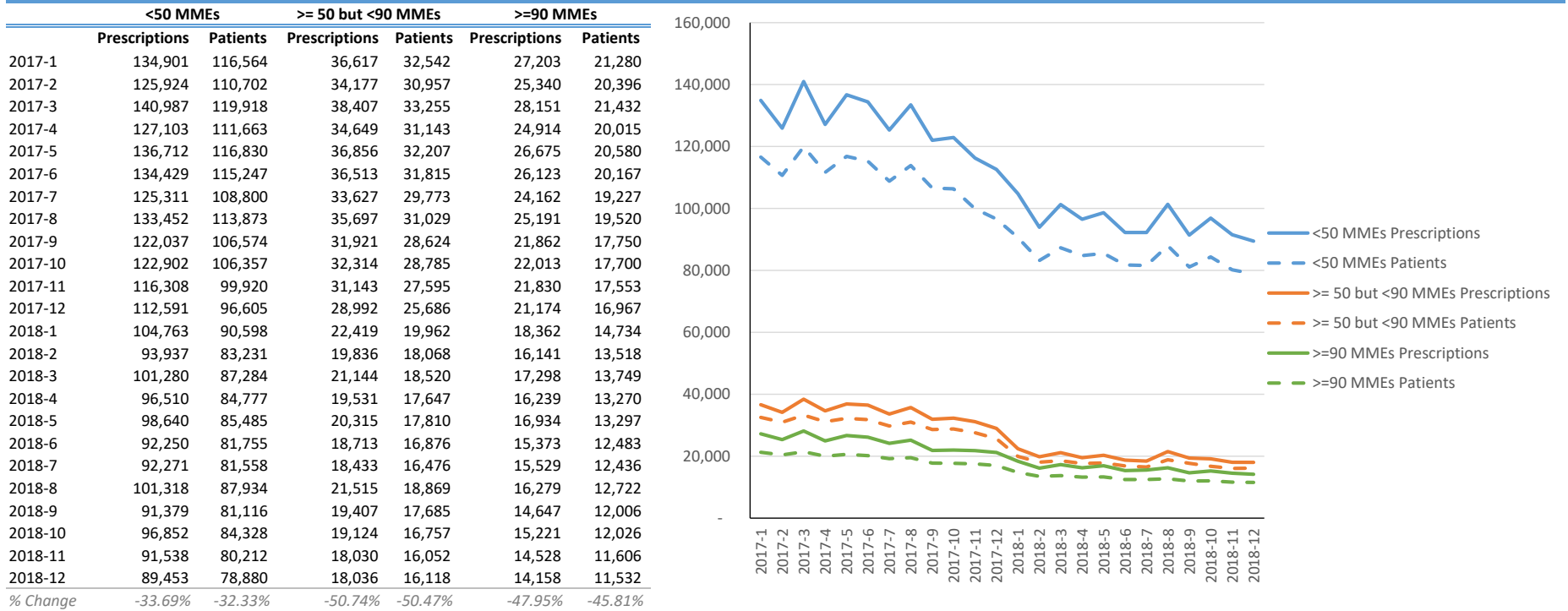
	Lincoln		Lyon		Mineral		Nye		Pershing		Storey		Washoe		White Pine	
	Prescriptions	Patients	Prescriptions	Patients	Prescriptions	Patients	Prescriptions	Patients	Prescriptions	Patients	Prescriptions	Patients	Prescriptions	Patients	Prescriptions	Patients
2017-1	76	69	1,025	914	102	90	988	872	69	61	91	82	5,760	5,132	139	117
2017-2	52	49	1,006	922	89	81	932	860	64	58	86	79	5,378	4,829	136	123
2017-3	47	45	1,122	955	86	79	996	881	72	59	96	87	6,045	5,218	151	131
2017-4	67	62	995	891	84	80	941	851	55	53	80	75	5,483	4,907	157	133
2017-5	75	65	1,040	908	77	74	985	860	55	53	93	87	5,861	5,133	149	123
2017-6	73	66	1,013	875	103	88	994	872	64	58	96	89	5,715	5,035	150	118
2017-7	72	66	975	864	79	72	870	774	53	46	84	76	5,197	4,647	126	108
2017-8	68	58	1,051	909	93	84	932	805	67	55	101	90	5,456	4,800	135	108
2017-9	77	71	997	888	94	84	840	737	41	36	81	73	4,931	4,427	119	100
2017-10	74	63	953	848	78	73	855	748	44	40	79	68	4,869	4,350	128	112
2017-11	74	61	934	827	80	71	810	723	54	49	78	67	4,899	4,326	135	106
2017-12	70	61	901	792	73	72	786	690	54	48	81	73	4,623	4,153	118	94
2018-1	71	62	727	652	61	56	675	594	34	32	44	39	3,444	3,120	104	90
2018-2	53	47	604	556	53	51	613	567	32	27	42	40	3,062	2,818	73	68
2018-3	58	52	684	605	56	49	678	585	35	30	57	50	3,227	2,837	87	80
2018-4	63	54	638	578	41	40	592	544	40	36	46	45	2,994	2,709	97	81
2018-5	59	53	654	576	54	46	643	554	39	34	59	55	3,029	2,709	104	91
2018-6	55	50	594	538	53	45	575	526	23	23	47	43	2,863	2,612	98	83
2018-7	63	51	538	488	42	40	601	543	24	23	59	50	2,790	2,504	92	81
2018-8	62	54	617	542	53	47	641	571	25	23	64	56	2,976	2,644	86	77
2018-9	57	53	564	517	47	45	593	542	19	19	55	51	2,783	2,545	87	80
2018-10	58	53	602	528	52	47	613	540	31	28	40	38	2,881	2,548	87	74
2018-11	54	47	562	514	57	50	596	517	30	28	37	36	2,744	2,449	90	76
2018-12	56	49	574	521	50	49	589	522	28	27	34	31	2,711	2,448	96	78
% Change	-26.32%	-28.99%	-44.00%	-43.00%	-50.98%	-45.56%	-40.38%	-40.14%	-59.42%	-55.74%	-62.64%	-62.20%	-52.93%	-52.30%	-30.94%	-33.33%

Number of Opioid Prescriptions and Patients with more than 90 MMEs per Month, by Month and Resident County, 2017 - 2018

Lincoln - White Pine Counties

	Lincoln		Lyon		Mineral		Nye		Pershing		Storey		Washoe		White Pine	
	Prescriptions	Patients	Prescriptions	Patients	Prescriptions	Patients	Prescriptions	Patients	Prescriptions	Patients	Prescriptions	Patients	Prescriptions	Patients	Prescriptions	Patients
2017-1	41	35	699	584	60	51	789	628	33	28	58	53	3,631	2,839	95	75
2017-2	42	36	645	550	50	45	709	585	26	22	59	52	3,392	2,705	114	87
2017-3	32	27	713	579	76	60	805	630	24	22	64	57	3,728	2,858	120	87
2017-4	41	34	622	515	65	58	706	585	26	21	58	48	3,325	2,669	102	80
2017-5	56	37	640	535	55	48	723	570	33	30	59	49	3,620	2,784	119	88
2017-6	55	35	615	502	69	59	704	559	29	24	59	48	3,509	2,679	112	82
2017-7	49	40	589	492	63	56	674	541	22	20	45	41	3,152	2,523	105	85
2017-8	44	37	626	508	77	60	700	545	38	29	50	43	3,294	2,568	120	85
2017-9	40	37	552	462	66	57	607	496	31	26	45	38	2,967	2,399	124	86
2017-10	40	34	520	437	75	59	634	500	33	27	36	34	2,907	2,325	91	72
2017-11	33	29	547	453	55	49	600	484	31	23	43	39	2,820	2,290	99	73
2017-12	31	28	519	436	51	43	559	450	27	22	51	43	2,792	2,231	87	70
2018-1	27	22	418	346	41	33	524	414	24	20	47	35	2,154	1,709	64	50
2018-2	18	14	351	311	41	34	487	405	22	18	42	36	1,951	1,589	39	31
2018-3	27	23	374	318	44	32	486	388	22	15	52	41	2,076	1,595	60	48
2018-4	19	17	336	291	31	24	447	367	15	13	46	38	1,958	1,554	58	43
2018-5	23	18	358	296	29	24	429	348	20	17	49	40	2,047	1,549	58	39
2018-6	17	15	320	266	30	26	399	324	19	15	41	31	1,830	1,440	64	43
2018-7	16	14	348	288	32	31	393	310	18	15	45	35	1,803	1,379	56	41
2018-8	21	17	334	270	32	25	419	318	17	11	46	35	1,847	1,411	50	39
2018-9	12	11	323	272	25	23	373	309	14	11	37	30	1,610	1,311	48	40
2018-10	19	12	304	245	23	22	384	303	16	14	49	35	1,673	1,313	59	44
2018-11	15	13	313	253	24	22	376	306	21	14	40	28	1,545	1,230	45	35
2018-12	19	14	280	223	28	26	369	290	15	13	43	28	1,602	1,247	52	39
% Change	-53.66%	-60.00%	-59.94%	-61.82%	-53.33%	-49.02%	-53.23%	-53.82%	-54.55%	-53.57%	-25.86%	-47.17%	-55.88%	-56.08%	-45.26%	-48.00%

Nevada Opioid Prescriptions and Patients by MME per Month, by Month, January 2017 - December 2018



Opioid Prescriptions For Both Less Than and Greater Than 30 Days and 90 Days, by Top 10 ICD-10 Group, 2018

< 30 Days Supply		
Top 10 Diagnosis Groups	ICD-10 Code	Prescriptions
Dorsalgia	M54	36,106
Diseases of the Nervous System, Pain, not elsewhere classified	G89	33,816
Dental caries	K02	12,998
Other joint disorder, not elsewhere classified	M25	11,710
Diseases of pulp and periapical tissues	K04	11,106
Pain, unspecified	R52	9,809
Thoracic, thoracolumbar, and lumbosacral intervertebral disc disorders	M51	8,634
Other disorders of teeth and supporting structures	K08	8,196
Abdominal and pelvic pain	R10	6,536
Spondylosis	M47	5,916

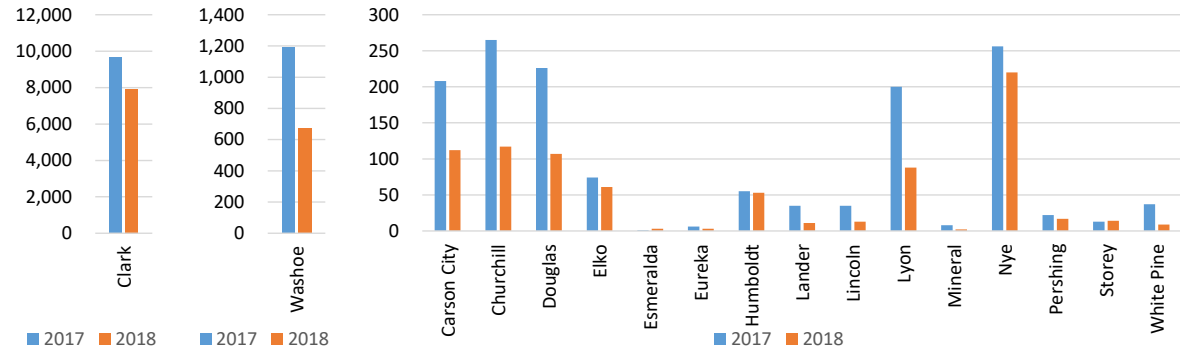
≥ 30 but < 90 Days Supply		
Top 10 Diagnosis Groups	ICD-10 Code	Prescriptions
Dorsalgia	M54	156,752
Thoracic, thoracolumbar, and lumbosacral intervertebral disc disorders	M51	74,905
Spondylosis	M47	61,982
Diseases of the Nervous System, Pain, not elsewhere classified	G89	43,227
Other joint disorder, not elsewhere classified	M25	30,525
Intraoperative and postprocedural complications and disorders of musculoskeletal system, not elsewhere classified	M96	18,455
Cervical disc disorders	M50	18,024
Other and unspecified soft tissue disorders, not elsewhere classified	M79	16,799
Other spondylopathies	M48	14,074
Osteoarthritis of knee	M17	10,502

≥ 90 Days Supply		
Top 10 Diagnosis Groups	ICD-10 Code	Prescriptions
Dorsalgia	M54	791
Thoracic, thoracolumbar, and lumbosacral intervertebral disc disorders	M51	212
Diseases of the Nervous System, Pain, not elsewhere classified	G89	195
Other joint disorder, not elsewhere classified	M25	192
Other and unspecified soft tissue disorders, not elsewhere classified	M79	144
Other and unspecified osteoarthritis	M19	133
Osteoarthritis of knee	M17	111
Spondylosis	M47	104
Polyosteoarthritis	M15	97
Migraine	G43	58

Opioid Prescriptions with Refills Where Initial Rx is for < 15 Days Supply, by Resident County, 2017 - 2018

	2017	2018
Carson City	208	112
Churchill	265	117
Clark	9,655	7,922
Douglas	226	107
Elko	74	61
Esmeralda	1	3
Eureka	6	3
Humboldt	55	53
Lander	35	11
Lincoln	35	13
Lyon	200	88
Mineral	8	2
Nye	256	220
Pershing	22	17
Storey	13	14
Washoe	1,189	669
White Pine	37	9
Total	12,285	9,421

Only initial prescriptions filled in January to September of 2017 and 2018 were considered, respectively. Then, for each year, refill prescriptions were considered for January-December of 2017 and 2018 respectively. This was done in order to compare year over year between 2017 and 2018.



Note: Clark and Washoe Counties are represented separately above due to the volume of prescriptions in those regions, and so that the differences in the smaller regions can be seen in the graphs.

Number of Individuals who were Co-Prescribed Benzodiazepines and Opioids in the Same Month, by Month and Resident County, January 2017 - December 2018

	Carson City	Churchill	Clark	Douglas	Elko	Esmeralda	Eureka	Humboldt	Lander	Lincoln	Lyon	Mineral	Nye	Pershing	Storey	Washoe	White Pine	Total
2017-1	652	285	22,278	516	318	4	24	101	55	59	651	49	871	47	71	3,848	92	29,921
2017-2	575	246	20,639	445	294	4	21	120	55	49	597	57	834	40	69	3,498	99	27,642
2017-3	650	280	22,731	499	368	8	26	123	46	47	665	61	895	49	66	3,804	101	30,419
2017-4	578	256	20,233	440	310	5	21	102	45	60	590	55	801	42	56	3,480	92	27,166
2017-5	657	267	21,428	483	341	5	23	102	37	52	607	46	884	54	61	3,663	115	28,825
2017-6	607	262	20,799	483	301	4	22	109	39	54	588	58	802	48	56	3,548	101	27,881
2017-7	537	232	19,320	437	314	7	21	96	37	50	524	47	742	34	51	3,196	101	25,746
2017-8	580	275	20,269	483	330	7	23	105	41	49	566	56	760	34	53	3,427	92	27,150
2017-9	551	272	18,249	455	293	5	25	93	31	45	533	49	688	26	56	3,170	90	24,631
2017-10	616	255	18,463	453	311	4	15	111	36	53	535	43	741	27	54	3,248	100	25,065
2017-11	557	241	17,265	420	291	7	18	96	34	45	540	27	650	34	55	3,151	85	23,516
2017-12	540	249	16,470	459	229	4	16	107	34	50	531	31	645	31	58	2,957	86	22,497
2018-1	517	228	14,999	403	201	6	9	86	34	50	463	36	607	27	40	2,644	81	20,431
2018-2	431	216	12,728	369	173	2	14	67	30	48	431	43	520	26	38	2,358	53	17,547
2018-3	456	203	13,636	393	198	5	14	72	25	44	424	40	570	29	44	2,475	80	18,708
2018-4	450	187	13,022	369	180	5	12	71	25	49	411	31	537	24	40	2,352	76	17,841
2018-5	423	206	12,587	369	175	3	12	67	29	46	399	31	516	27	38	2,195	87	17,210
2018-6	410	159	11,046	361	185	3	11	61	23	45	357	31	470	22	34	1,914	82	15,214
2018-7	370	163	10,583	347	188	2	9	55	26	41	355	38	476	22	33	1,895	81	14,684
2018-8	404	161	11,034	373	180	3	11	40	27	50	381	35	486	26	37	1,952	77	15,277
2018-9	357	132	9,874	312	163	3	13	30	20	39	334	33	424	27	39	1,775	77	13,652
2018-10	389	145	10,097	354	170	3	10	34	23	54	359	35	441	29	28	1,859	78	14,108
2018-11	338	157	9,561	344	153	4	8	31	28	45	333	41	389	28	30	1,733	75	13,298
2018-12	362	141	9,123	350	163	3	8	35	17	45	352	35	406	22	30	1,800	80	12,972
Total	12,007	5,218	376,434	9,917	5,829	106	386	1,914	797	1,169	11,526	1,008	15,155	775	1,137	65,942	2,081	511,401

% Change	-44.48%	-50.53%	-59.05%	-32.17%	-48.74%	-25.00%	-66.67%	-65.35%	-69.09%	-23.73%	-45.93%	-28.57%	-53.39%	-53.19%	-57.75%	-53.22%	-13.04%	-56.65%
----------	---------	---------	---------	---------	---------	---------	---------	---------	---------	---------	---------	---------	---------	---------	---------	---------	---------	---------

